

# Shani Lawrence Garden Designs



**Gold Medal winning garden designer at RHS Hampton Court Palace Flower Show 2001**

Shani has been friendly with wildlife since childhood, when she could be found rooting around for spiders and ladybirds. She now incorporates homes for her former playmates in the gardens of her unsuspecting clients. Shani likes to design wildlife friendly, sustainable gardens that are places of relaxation and wonder. Contact Shani to unleash her creativity on your patch.

[www.shanilawrence.co.uk](http://www.shanilawrence.co.uk)  
shani@shanilawrence.co.uk  
[www.facebook.com/shanilawrencegardendesigns](http://www.facebook.com/shanilawrencegardendesigns)

## Play - nurture

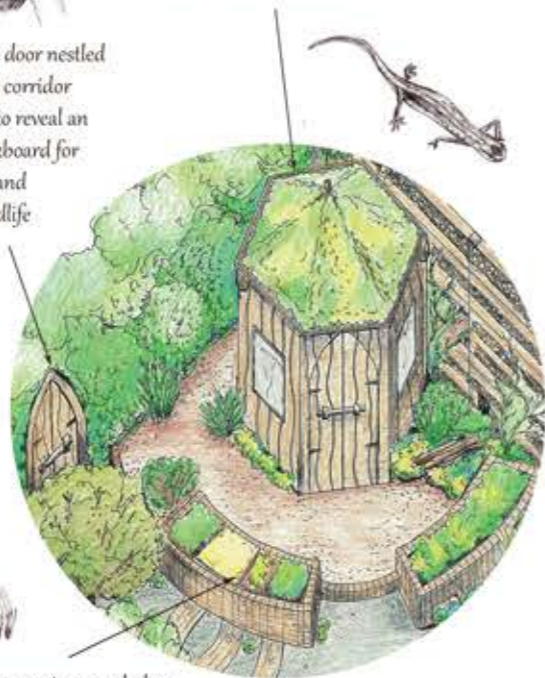


Secret garden door nestled in the wildlife corridor hedge opens to reveal an outdoor blackboard for creative play and recording wildlife observations



Raised beds for growing, sand play, potions and mud kitchens

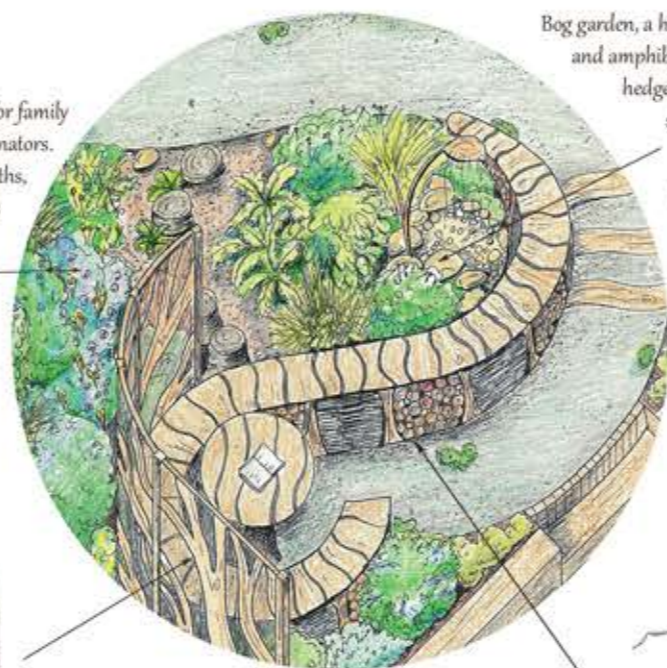
Den to hide away, make believe, store treasure and play out, even in the rain. Sedum roof for pollinators and sustainably sourced timber. Converts to potting shed or garden room when children are older.



Beautiful planting for family well-being and pollinators. Bees, butterflies, moths, hoverflies, lacewings visit the garden in search of nectar or pollen. A mix of native and nectar rich species, flowering through the year.



Sculptural seating area for adults to observe their children and other mini-beasts and unwind.



Bog garden, a haven for invertebrates and amphibians, water source for hedgehogs and birds and a safe place of discovery for children.



Log piles underneath the seating, perfect for invertebrates such as woodlice and millepedes, allies and friends in the wildlife garden.



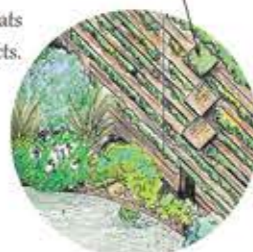
## nature - Habitats

Compost bins - what comes out goes back in: recycling waste, mulching beds and a habitat for invertebrates, reptiles and amphibians.



Bird tables, bird baths, wren and robin boxes, ideal for small urban plots. Berrying plants and grasses for nest material, wildlife hedge for cover and nesting.

Small trees - habitats for birds and insects.



Hedgehog house - hibernation home for these lovely mammals. Don't forget feeding stations, and holes in your fence so they can move between gardens.



## Made for Gardens

Beautiful garden structures, furniture, children's dens, gates, pergolas, raised beds, compost heaps, garden benches and anything you or we can imagine from sustainably sourced materials, FSC or locally well managed timber. Bespoke and designed pieces.

[www.madeforgardens.co.uk](http://www.madeforgardens.co.uk)  
enquiries@madeforgardens.co.uk  
[www.facebook.com/madeforgardens](http://www.facebook.com/madeforgardens)

